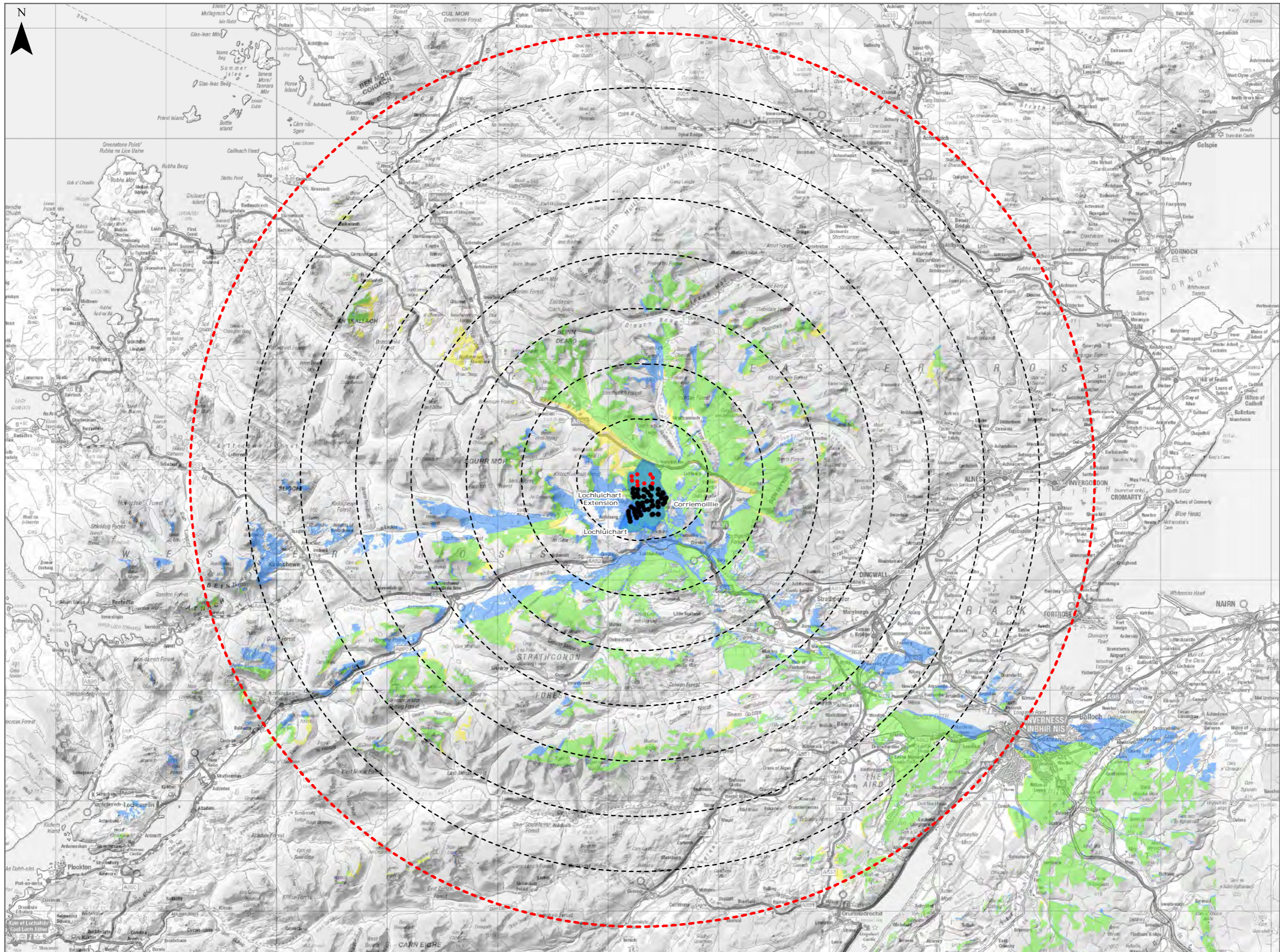


Figure 9.12a: CZTV - Corriemoillie, Lochluichart & Extension (40km)



Legend:

- Proposed Turbines
- ⬡ 40km Study Area Boundary
- ⬡ 5km Distance Radii
- Cumulative Wind Turbines

Wind Farm Status (02/02/2018)

- ⬡ Operational / Under Construction
- ⬡ Combined Theoretical Visibility
- ⬡ Proposed Wind Farm Theoretical Visibility
- ⬡ Corriemoillie, Lochluichart & Extension Theoretical Visibility

Title:
CZTV - Corriemoillie, Lochluichart & Extension (40km)

Lochluichart Wind Farm Extension II

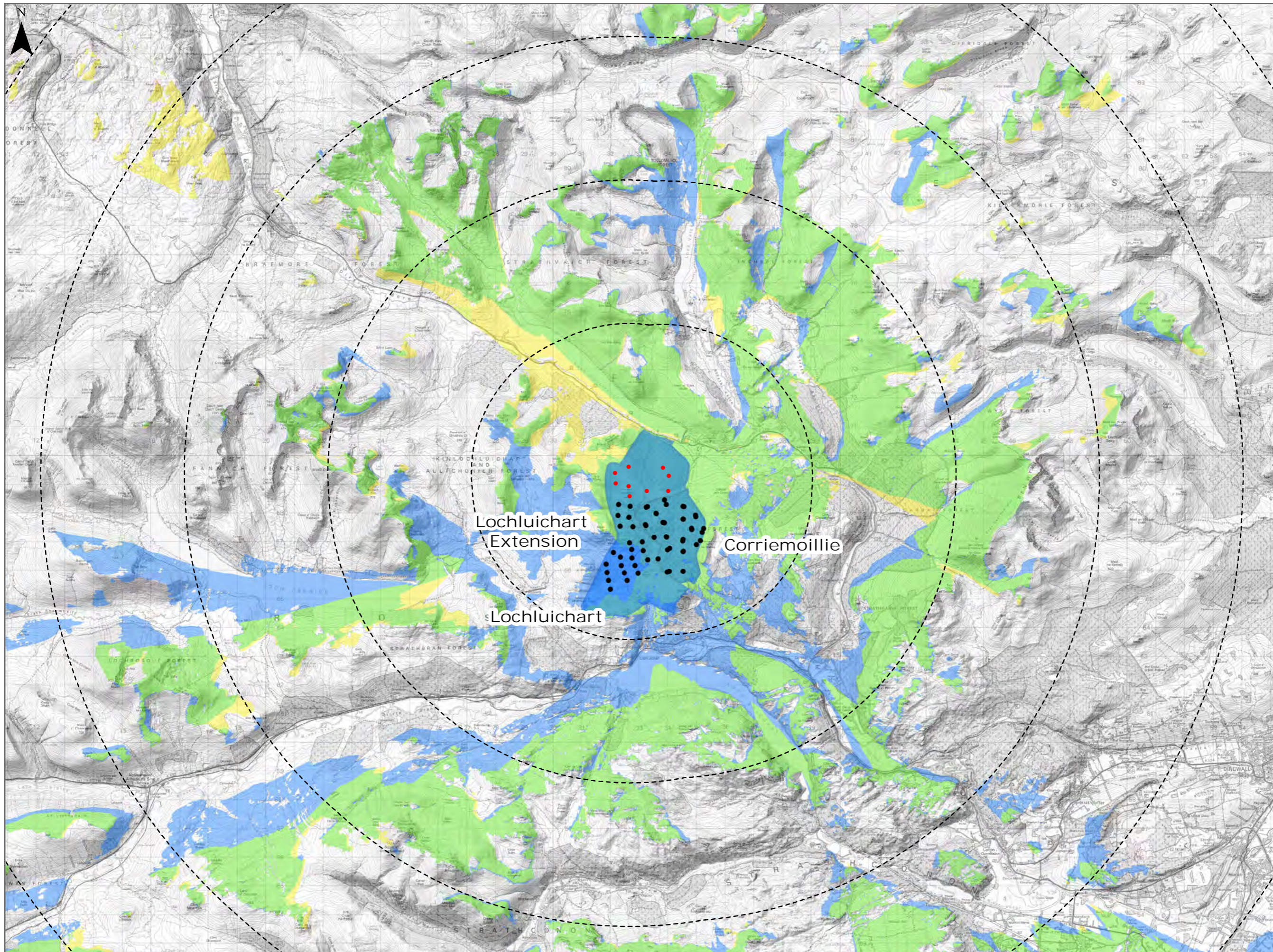
Source:
© Crown copyright and database rights (2018)
OS (license No 0100031673)

Client:
Infinergy

| | |
|----------------------|-------------------|
| Drawn by: MJF | Checked: JW |
| Date: 12/10/2018 | Figure: 9.12a |
| Scale: 0 2.5 5 km | Revision No: B |

INFINERGY

Figure 9.12b: CZTV - Corriemoillie, Lochluichart & Extension (15km)



- Legend:
- Proposed Turbines
 - ◻ 40km Study Area Boundary
 - ◻ 5km Distance Radii
 - Cumulative Wind Turbines
- Wind Farm Status (02/02/2018)
- ◻ Operational / Under Construction
 - ◻ Combined Theoretical Visibility
 - ◻ Proposed Wind Farm Theoretical Visibility
 - ◻ Corriemoillie, Lochluichart & Extension Theoretical Visibility

Title:
CZTV - Corriemoillie, Lochluichart & Extension (15km)

Lochluichart Wind Farm Extension II

Source:
© Crown copyright and database rights (2018)
OS (license No 0100031673)

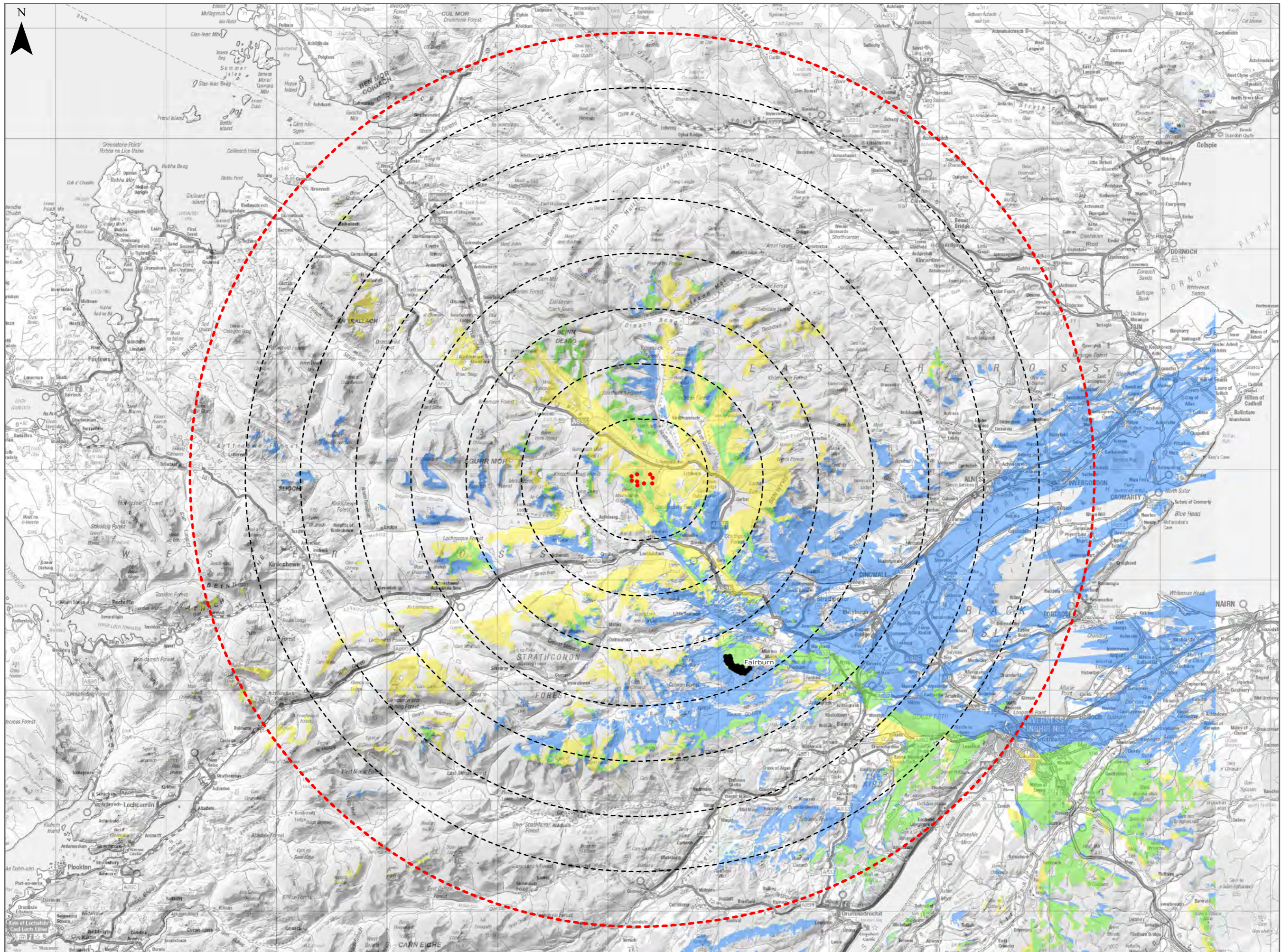
Client: Infinergy

| | |
|------------------|----------------|
| Drawn by: MJF | Checked: JW |
|------------------|----------------|

| | |
|---------------------|------------------|
| Date: 12/10/2018 | Figure: 9.12b |
|---------------------|------------------|

| | |
|------------------------|--------------|
| Scale: 0 2 4 6 8 10 | Revision No: |
|------------------------|--------------|

Figure 9.13: CZTV - Fairburn (40km)



Legend:

- Proposed Turbines
- 40km Study Area Boundary
- 5km Distance Radii
- Cumulative Wind Turbines

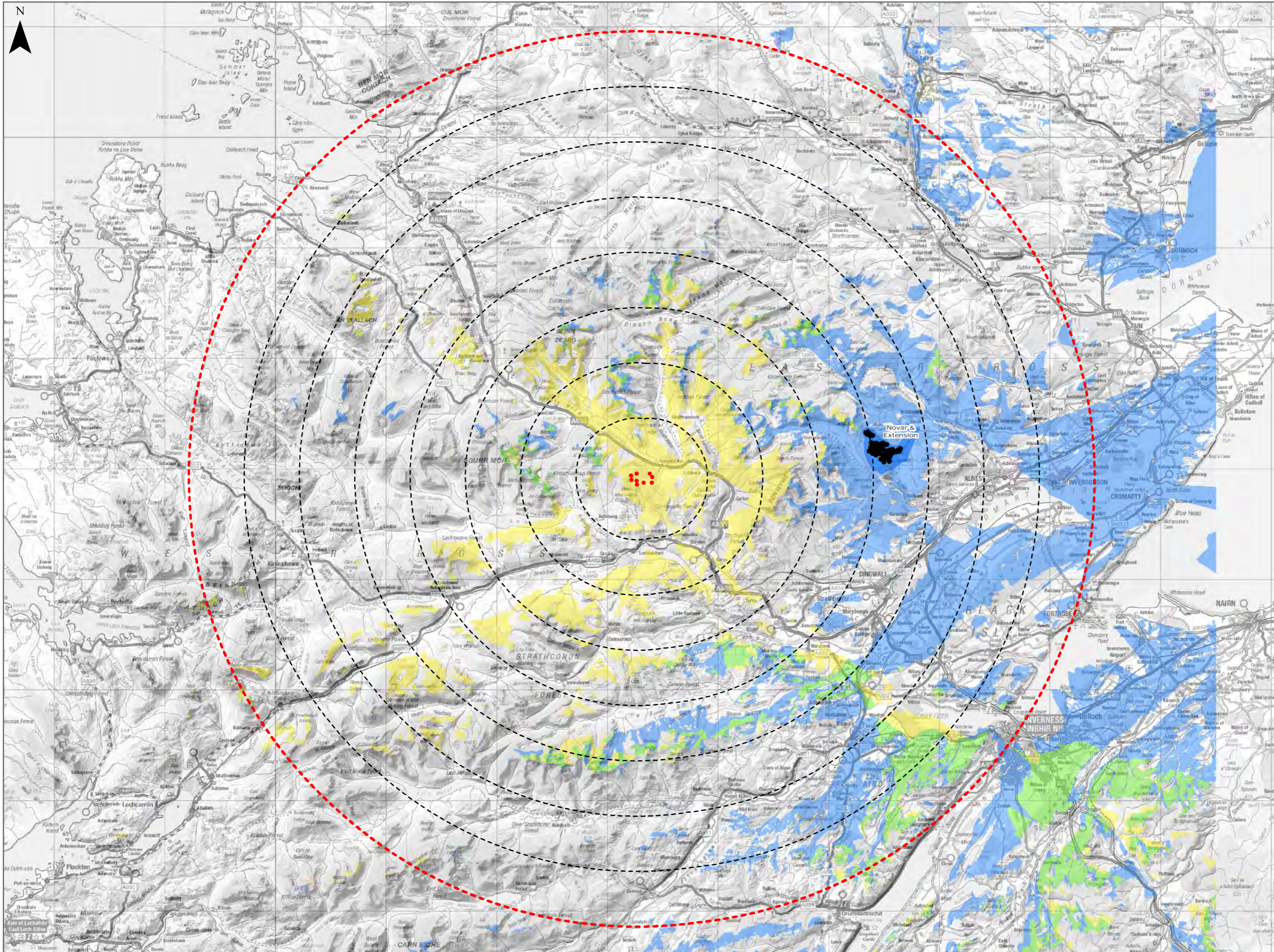
Wind Farm Status (02/02/2018)

- Operational / Under Construction
- Combined Theoretical Visibility
- Proposed Wind Farm Theoretical Visibility
- Fairburn Theoretical Visibility

| | | | |
|------------|--------------|--|--|
| Title: | | CZTV - Fairburn (40km) | |
| | | Lochluichart Wind Farm Extension II | |
| Source: | | © Crown copyright and database rights (2018) OS (license No 0100031673) | |
| Client: | | Infinergy | |
| Drawn by: | Checked: | | |
| MJF | JW | | |
| Date: | Figure: | | |
| 12/10/2018 | 9.13 | | |
| Scale: | Revision No: | | |
| 0 2.5 5 km | B | | |

INFINERGY

Figure 9.14: CZTV - Novar & Extension (40km)



- Legend:
- Proposed Turbines
 - ⬡ 40km Study Area Boundary
 - ⬡ 5km Distance Radii
 - Cumulative Wind Turbines
- Wind Farm Status (02/02/2018)
- ⬢ Operational / Under Construction
 - ⬢ Combined Theoretical Visibility
 - ⬢ Proposed Wind Farm Theoretical Visibility
 - ⬢ Novar & Extension Theoretical Visibility

Title:
CZTV - Novar & Extension (40km)

Lochluichart Wind Farm
Extension II

Source:
© Crown copyright and database rights (2018)
OS (license No 0100031673)

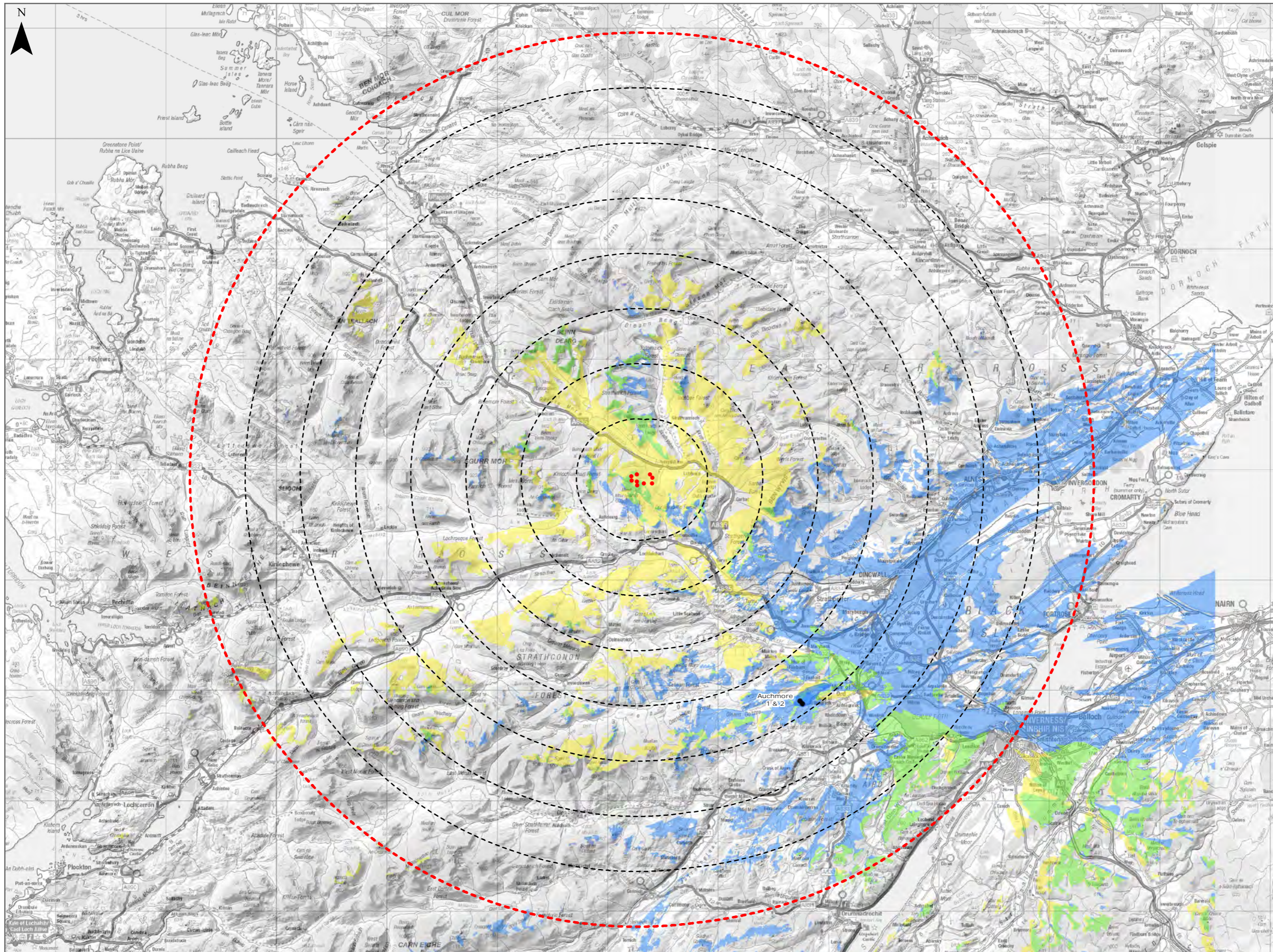
Client: Infinergy

| | |
|------------------|----------------|
| Drawn by: MJF | Checked: JW |
|------------------|----------------|

| | |
|---------------------|-----------------|
| Date: 12/10/2018 | Figure: 9.14 |
|---------------------|-----------------|

| | |
|-------------------------|-------------------|
| Scale: 0 2.5 5 km | Revision No: B |
|-------------------------|-------------------|

Figure 9.15: CZTV - Auchmore 1 & 2 (40km)



Legend:

- Proposed Turbines
- 40km Study Area Boundary
- 5km Distance Radii
- Cumulative Wind Turbines

Wind Farm Status (02/02/2018)

- Operational / Under Construction
- Combined Theoretical Visibility
- Proposed Wind Farm Theoretical Visibility
- Auchmore 1 & 2 Theoretical Visibility

Title: CZTV - Auchmore 1 & 2 (40km)

Lochluichart Wind Farm Extension II

Source: © Crown copyright and database rights (2018) OS (license No 0100031673)

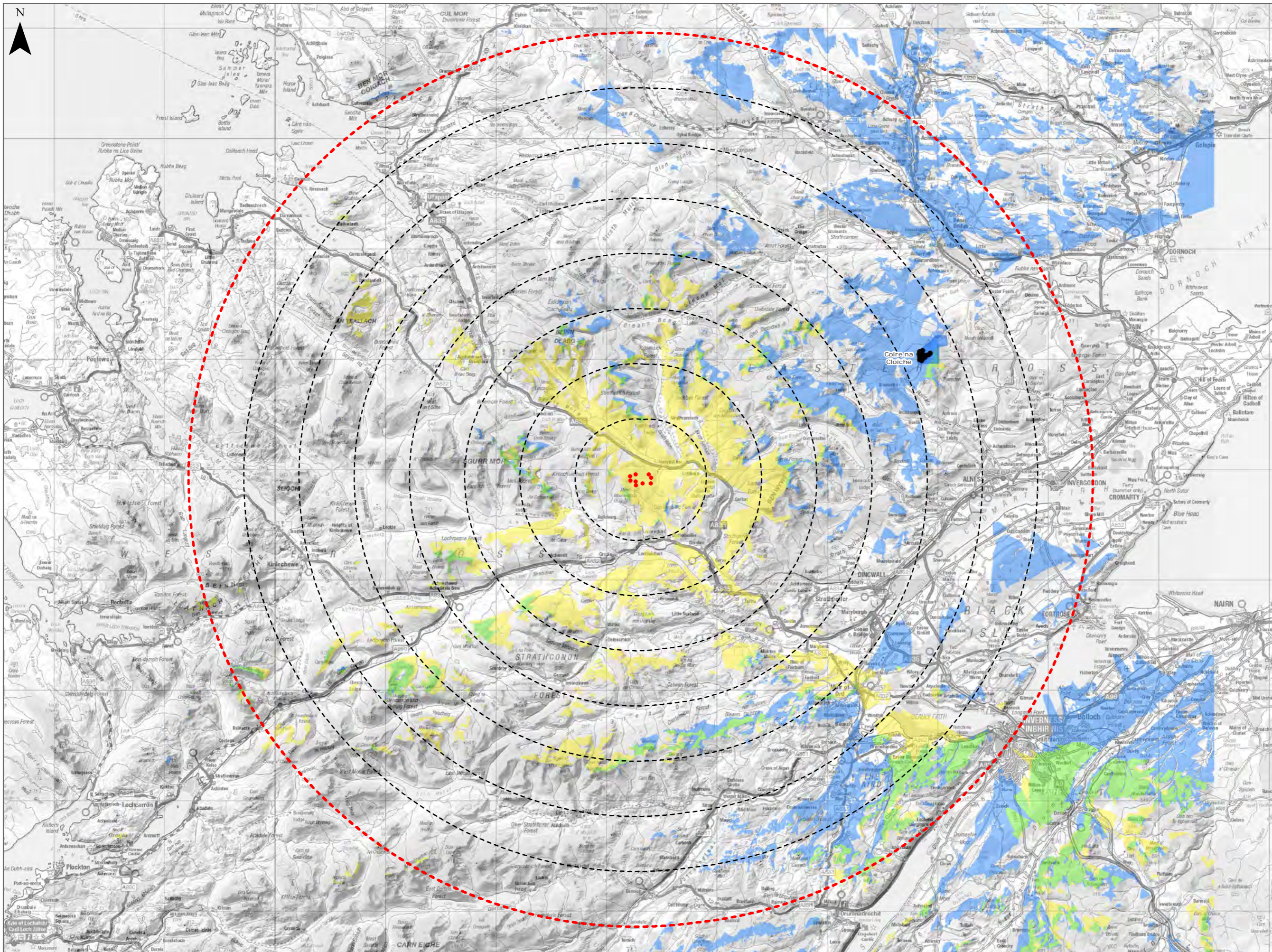
Client: Infinergy

| | |
|---------------|-------------|
| Drawn by: MJF | Checked: JW |
|---------------|-------------|

| | |
|------------------|--------------|
| Date: 12/10/2018 | Figure: 9.15 |
|------------------|--------------|

| | |
|-------------------|----------------|
| Scale: 0 2.5 5 km | Revision No: B |
|-------------------|----------------|

Figure 9.16: CZTV - Coire na Cloiche (40km)



- Legend:
- Proposed Turbines
 - 40km Study Area Boundary
 - 5km Distance Radii
 - Cumulative Wind Turbines
- Wind Farm Status (02/02/2018)
- Operational / Under Construction
 - Combined Theoretical Visibility
 - Proposed Wind Farm Theoretical Visibility
 - Coire na Cloiche Theoretical Visibility

Title: CZTV - Coire na Cloiche (40km)

Lochluichart Wind Farm Extension II

Source: © Crown copyright and database rights (2018) OS (license No 0100031673)

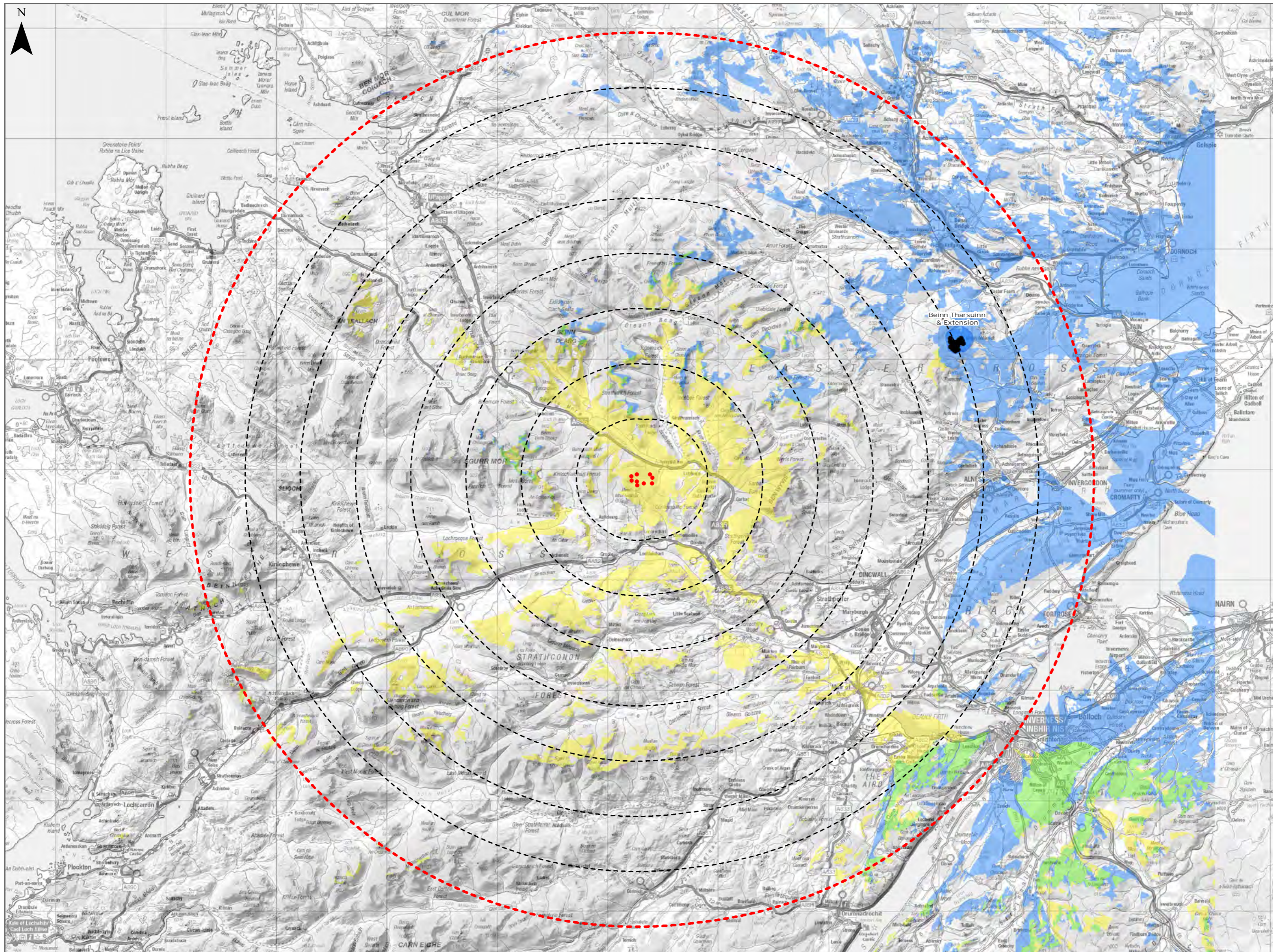
Client: Infinergy

| | |
|---------------|-------------|
| Drawn by: MJF | Checked: JW |
|---------------|-------------|

| | |
|------------------|--------------|
| Date: 12/10/2018 | Figure: 9.16 |
|------------------|--------------|

| | |
|-------------------|----------------|
| Scale: 0 2.5 5 km | Revision No: B |
|-------------------|----------------|

Figure 9.17: CZTV - Beinn Tharsuinn & Extension (40km)



- Legend:
- Proposed Turbines
 - ⬡ 40km Study Area Boundary
 - ⬡ 5km Distance Radii
 - Cumulative Wind Turbines
- Wind Farm Status (02/02/2018)
- Operational / Under Construction
 - Combined Theoretical Visibility
 - Proposed Wind Farm Theoretical Visibility
 - Beinn Tharsuinn & Extension Theoretical Visibility

Title:
CZTV - Beinn Tharsuinn & Extension
(40km)

Lochluichart Wind Farm
Extension II

Source:
© Crown copyright and database rights (2018)
OS (license No 0100031673)

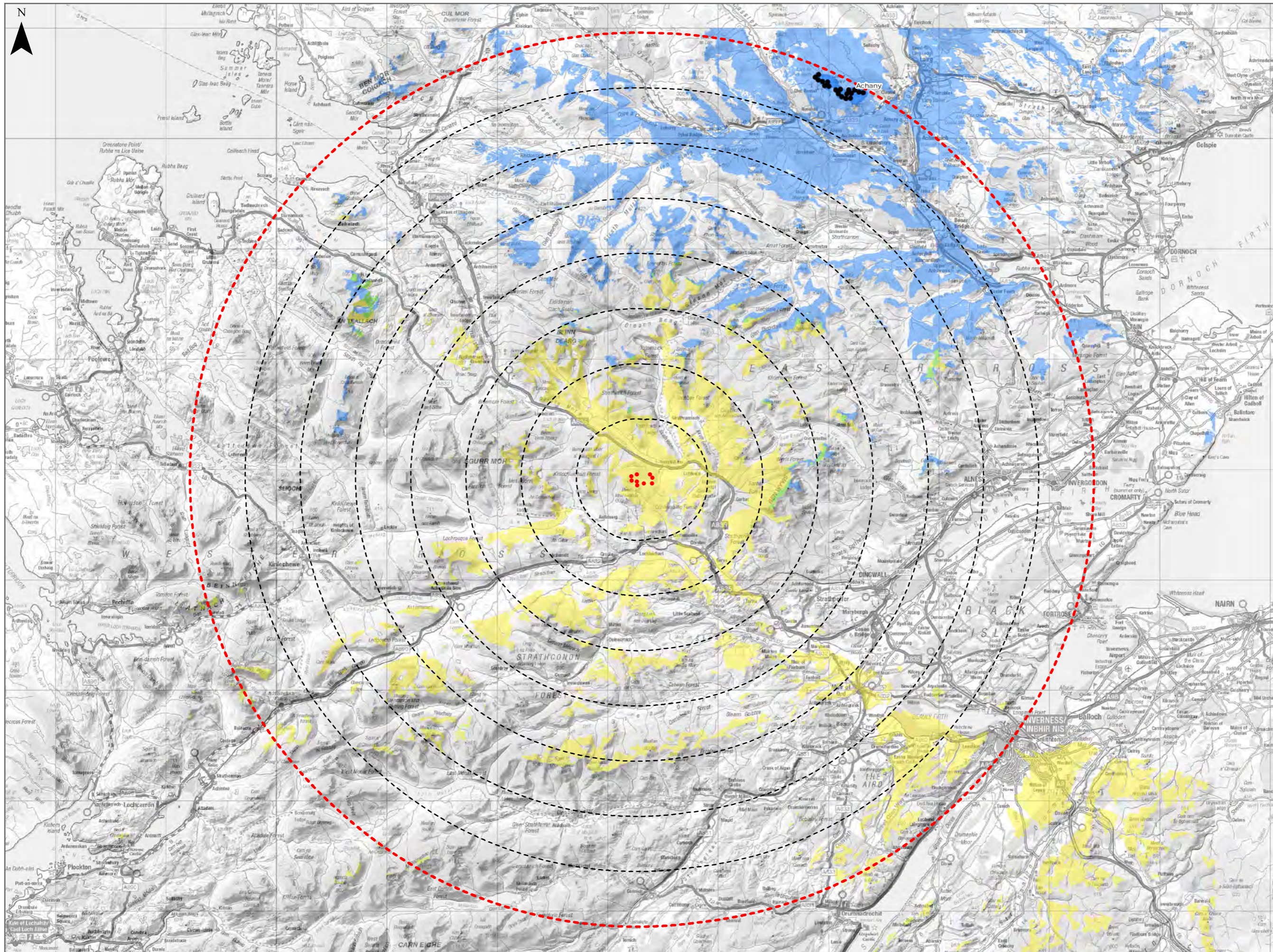
Client: Infinergy

| | |
|------------------|----------------|
| Drawn by: MJF | Checked: JW |
|------------------|----------------|

| | |
|---------------------|-----------------|
| Date: 12/10/2018 | Figure: 9.17 |
|---------------------|-----------------|

| | |
|-------------------------|-------------------|
| Scale: 0 2.5 5 km | Revision No: B |
|-------------------------|-------------------|

Figure 9.18: CZTV - Achany (40km)



Legend:

- Proposed Turbines
- 40km Study Area Boundary
- 5km Distance Radii
- Cumulative Wind Turbines

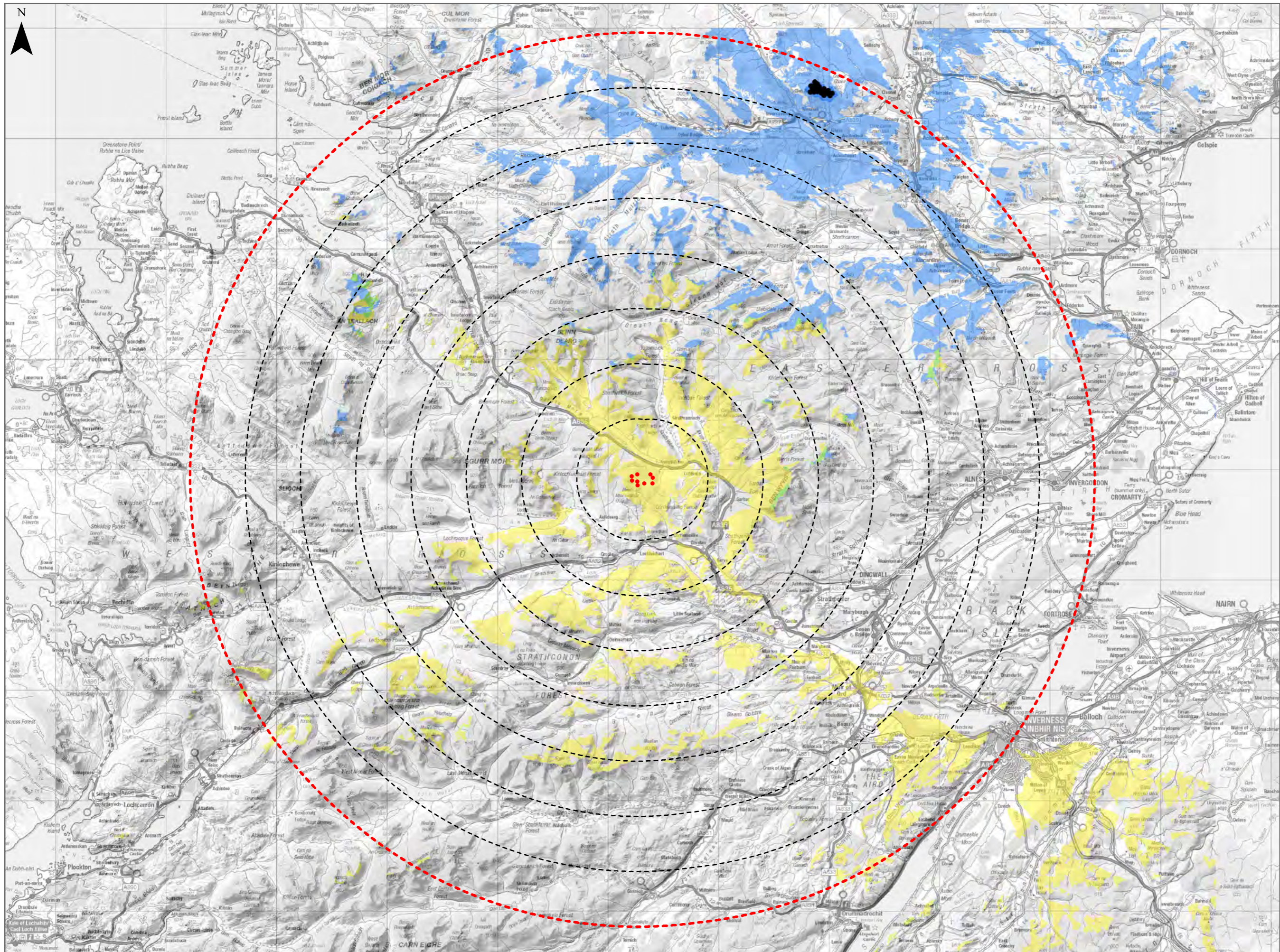
Wind Farm Status (02/02/2018)

- Operational / Under Construction
- Combined Theoretical Visibility
- Proposed Wind Farm Theoretical Visibility
- Achany Theoretical Visibility

| | |
|---|-------------------|
| Title: CZTV - Achany (40km) | |
| Lochluichart Wind Farm Extension II | |
| Source: © Crown copyright and database rights (2018) OS (license No 0100031673) | |
| Client: Infinergy | |
| Drawn by: MJF | Checked: JW |
| Date: 12/10/2018 | Figure: 9.18 |
| Scale: | Revision No: B |

INFINERGY

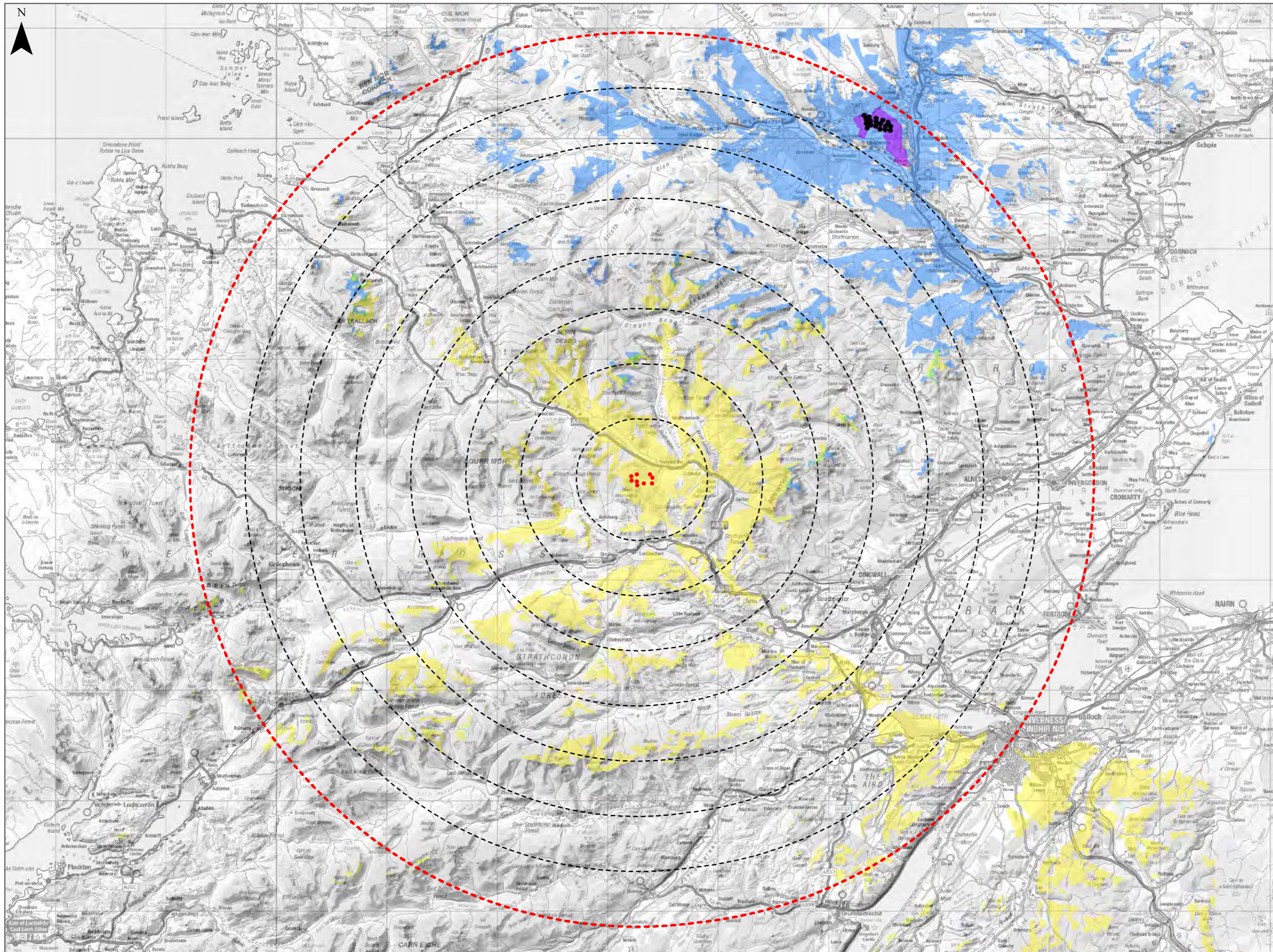
Figure 9.19: CZTV - Rosehall (40km)



- Legend:
- Proposed Turbines
 - ⬡ 40km Study Area Boundary
 - ⬡ 5km Distance Radii
 - Cumulative Wind Turbines
- Wind Farm Status (02/02/2018)
- Operational / Under Construction
 - Combined Theoretical Visibility
 - Proposed Wind Farm Theoretical Visibility
 - Rosehall Theoretical Visibility

| | |
|---|----------------|
| Title: CZTV - Rosehall (40km) | |
| Lochluichart Wind Farm Extension II | |
| Source: © Crown copyright and database rights (2018) OS (license No 0100031673) | |
| Client: Infinergy | |
| Drawn by: MJF | Checked: JW |
| Date: 12/10/2018 | Figure: 9.19 |
| Scale: 0 2.5 5 km | Revision No: B |
| INFINERGY | |

Figure 9.20: CZTV - Braemore (40km)



Legend:

- Proposed Turbines
- 40km Study Area Boundary
- 5km Distance Radii
- Cumulative Wind Turbines

Wind Farm Status (02/02/2018)

- Consented
- Combined Theoretical Visibility
- Proposed Wind Farm Theoretical Visibility
- Braemore Theoretical Visibility

| | |
|---|----------------|
| Title: CZTV - Braemore (40km) | |
| Lochluichart Wind Farm Extension II | |
| Source: © Crown copyright and database rights (2018) OS (license No 0100031673) | |
| Client: Infinergy | |
| Drawn by: MJF | Checked: JW |
| Date: 12/10/2018 | Figure: 9.20 |
| Scale: 0 2.5 5 km | Revision No: B |